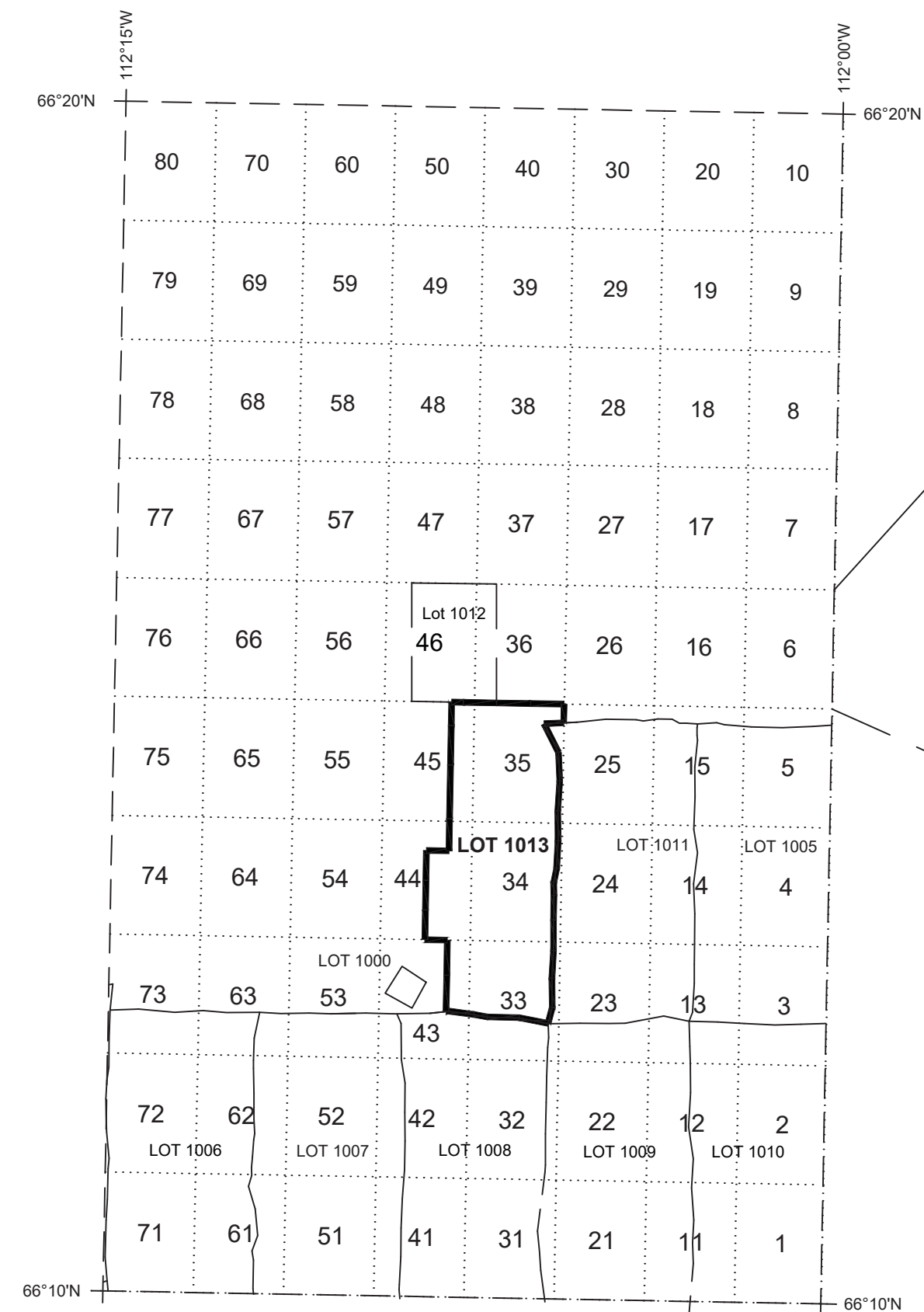
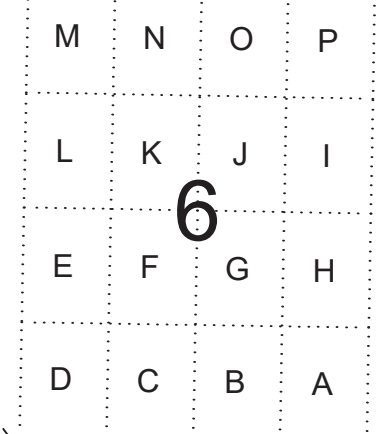


This specimen plan is to depict a survey pursuant to Chapters 2.2, 2.7 and 15 of the National Standards for the survey of Canada Lands.
This plan shows a survey of a mineral claim in Nunavut under the 2020 Nunavut Mining Regulations.

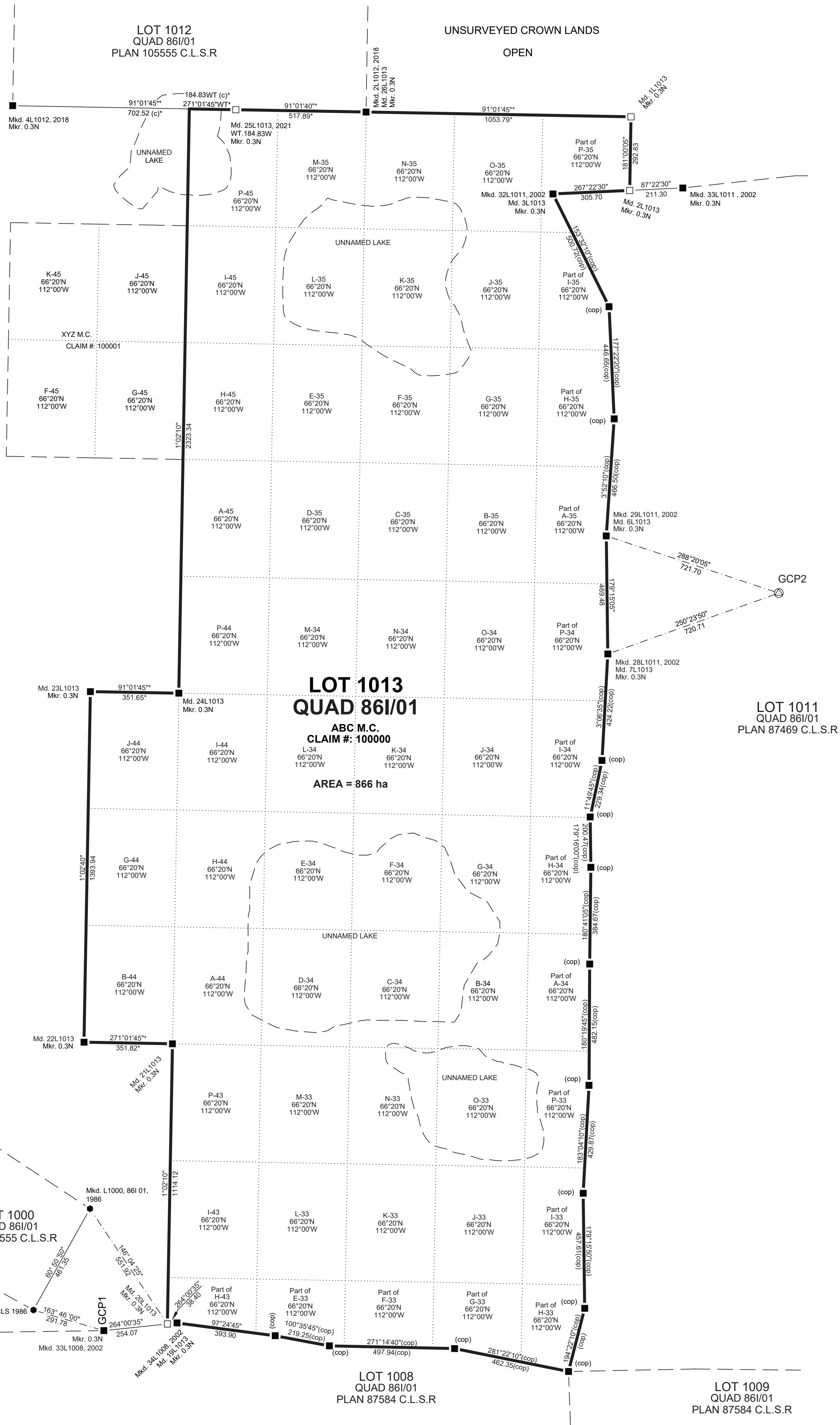


66°20'N - 112°00'W
GRID KEYPLAN

SECTION AND UNIT DETAIL



UNSURVEYED CROWN LANDS
OPEN



FOR DIGITAL PLANS, LEAVE BLANK SPACE BELOW

CANADA LANDS SURVEYS RECORDS

DATE:

SPECIMEN ONLY

COMPILED PLAN OF
ABC MINERAL CLAIM
LOT 1013, QUAD 86 I/01
AND FIELD NOTES OF SURVEY OF
ABC MINERAL CLAIM
LOT 1013, QUAD 86 I/01

NUNAVUT
GRID AREA 66° 20' N, 112°00' W.
LATITUDE 66°14' N., LONGITUDE 112°06' W. (APPROXIMATE)

SCALE 1 : 10,000



THE PLOT SIZE THAT WILL PROVIDE TRUE SCALE AND OPTIMUM READABILITY FOR THIS PLAN IS 610MM BY 914 MM

THIS SURVEY WAS EXECUTED DURING THE PERIOD OF MARCH 10 TO MARCH 14, 2021 BY , CLS

NOTE: THIS PLAN IS COMPILED FROM:
- PLAN OF LOT 1012, QUAD 86I/01, PLAN 105555 CLSR, SURVEYED BY , C.L.S., IN 2018
- PLAN AND FIELD NOTES OF SURVEY OF LOTS 1011 AND 1012, QUAD 86I/01, PLAN 87469 CLSR, SURVEYED BY , C.L.S. IN 2002
- PLAN AND FIELD NOTES OF SURVEY OF LOTS 1006 AND 1010, QUAD 86I/01, PLAN 87584 CLSR, SURVEYED BY , C.L.S. IN 2002

LEGEND

BEARINGS ARE UTM GRID, DERIVED FROM GNSS OBSERVATIONS AND ARE REFERRED TO THE CENTRAL MERIDIAN OF ZONE 12 (LONGITUDE 111° W).

| | |
|------------------------------------------------|---------|
| GEOREFERENCED CONTROL POINT | ⊙ |
| 1.6CM SQUARE IRON BAR, 78CM LONG PLACED | □ |
| 1.6CM SQUARE IRON BAR, FOUND | ■ |
| 1.6CM SQUARE IRON BAR, COPIED | ● (cop) |
| CLS 77 FOUND | ● |
| GRID UNIT BOUNDARIES SHOWN THUS | ----- |
| STREAMS AND LAKES | ~~~~~ |
| TRAVERSE LINE | ----- |
| LANDS DEALT WITH BY THIS PLAN ARE BOUNDED THUS | ===== |

L-33
66°20'N
112°00'W
IS AN ABBREVIATION FOR: UNIT L, SECTION 33, GRID AREA: 66° 20' NORTH, 112° 00' WEST

DISTANCES ARE HORIZONTAL GROUND LEVEL AND ARE EXPRESSED IN METRES AND DECIMALS THEREOF. TO COMPUTE GRID DISTANCES, MULTIPLY GROUND LEVEL DISTANCES BY THE AVERAGE COMBINED SCALE FACTOR OF 0.9996307.

* DENOTES A DIMENSION BETWEEN 2 LOCATIONS ON GEODESIC BOUNDARY. NORTH AND SOUTH UNIT BOUNDARIES ARE GEODESICS AS PER SCHEDULE 3 OF THE NUNAVUT MINING REGULATIONS.

LAKES AND STREAMS HAVE BEEN PLOTTED FROM NTS MAP SHEET 86 I/01.

MARKER POSTS ARE ANGLE IRON 2.5CM X 2.5CM X 1.5M LONG.

SURVEY REPORT AND SUPPLEMENTARY FIELD NOTES FOR THIS SURVEY ARE RECORDED UNDER FIELD BOOK _____ CLSR.

NOTE:

UNIT CORNERS ARE DEFINED BY SCHEDULE 3 OF THE 2020 NUNAVUT MINING REGULATIONS.

THE BOUNDARY INFORMATION ON THIS PLAN HAS BEEN COMPILED FROM INFORMATION AS NOTED AND THE FIELD NOTES CONTAINED HEREIN. EXCEPT FOR THE FIELD NOTES INCLUDED ON THIS PLAN, NO NEW FIELD WORK WAS PERFORMED TO VERIFY THE MONUMENTS, MEASUREMENTS, OR POTENTIAL BOUNDARY ENCROACHMENTS.

CERTIFIED CORRECT: RE SECTION 38 CANADA LANDS SURVEYORS REGULATIONS

(SURVEYOR)

DATE:



FOR DIGITAL PLANS, LEAVE BLANK SPACE BELOW

DEPARTMENT OF NATURAL RESOURCES
SECTION 31 CANADA LANDS SURVEYS ACT
APPROVED

SURVEYOR GENERAL BRANCH

| UTM COORDINATES - GNSS CONTROL STATIONS NAD83 (CSRS), ZONE 12 | | | | |
|-----------------------------------------------------------------------------------------------------------------------------------------------------------------------|------------|-----------|-----------------------------|-----------------------------------|
| STATION | NORTHING | EASTING | COMBINED SCALE FACTOR | ESTIMATED ABSOLUTE ACCURACY |
| GCP1 | 7343426.78 | 448694.65 | 0.9996362 | 0.05 |
| GCP2 | 7346357.72 | 451377.12 | 0.9996256 | 0.05 |
| COORDINATES FOR GCP1 AND GCP2 ARE NAD83 (CSRS), (2010.0) AND ARE DERIVED FROM PRECISE POINT POSITIONING. ABSOLUTE ACCURACY OF GCP CONTROL IS AT 95% CONFIDENCE LEVEL. | | | | |